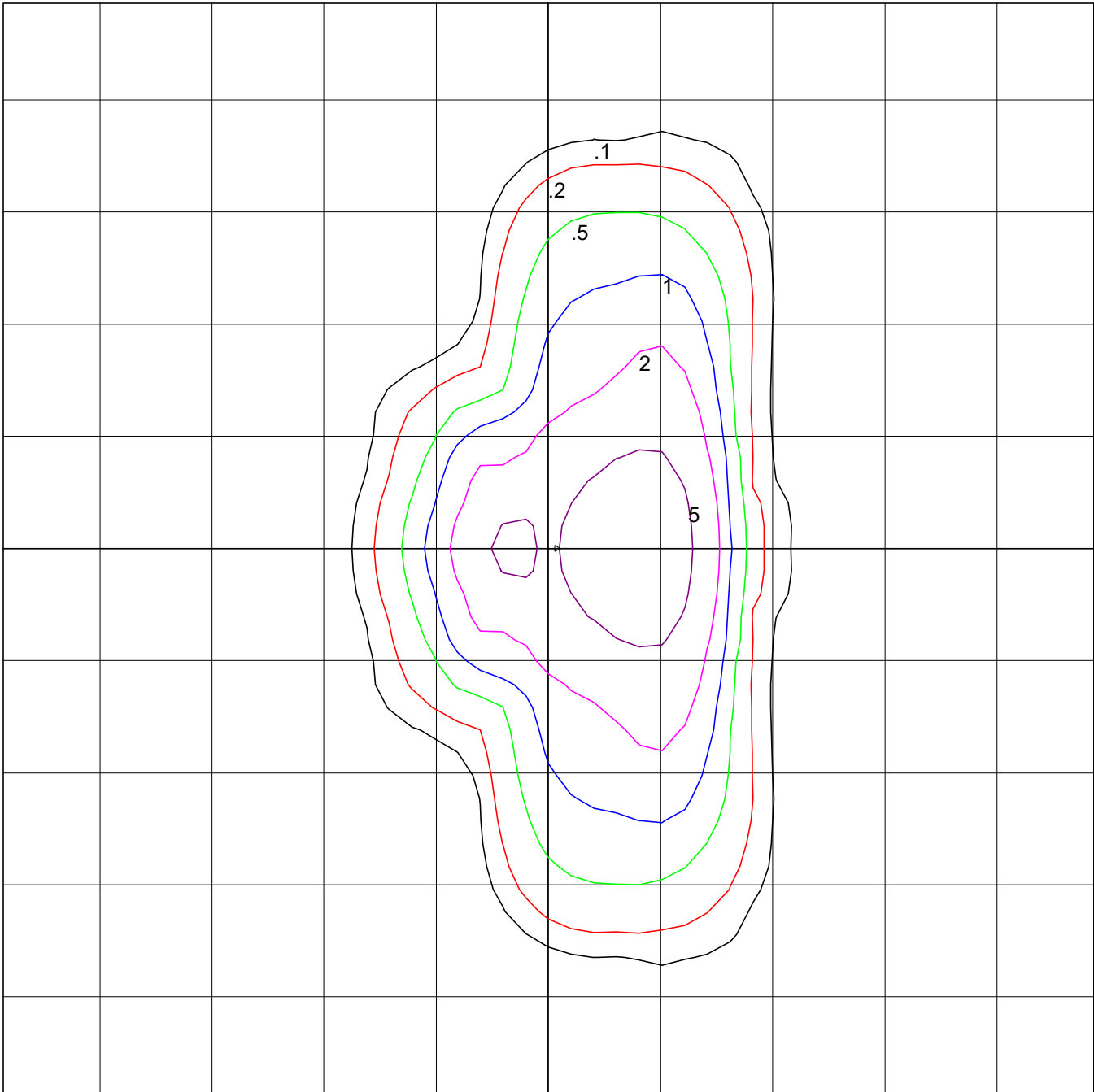




ÉCLAIRAGE
cyclone
LIGHTING



Cyclone Lighting
STRS1A-NL-T2MHS-P80-40K
Stretto
Clusters of Nichia 219F LEDs c/w Eldoled Driver
OTi180W/UNV/800C/2DIM/P6/G2 @ 120.00V

Horizontal Footcandles
Scale: 1 Inch = 25 Ft.
Light Loss Factor = 1.00
Lumens Per Lamp = N.A. (absolute photometry)
Luminaire Lumens = 11628
Mounting Height = 18.00 Ft
Maximum Calculated Value = 9.51 Fc
Arrangement: Single

PHOTOMETRIC FILENAME : STRS1A-NL-T2MHS-P80-40K.IES

DESCRIPTIVE INFORMATION (From Photometric File)

Cyclone Lighting
STRS1A-NL-T2MHS-P80-40K
Stretto
Clusters of Nichia 219F LEDs c/w Eldoled Driver
OTi180W/UNV/800C/2DIM/P6/G2 @ 120.00V

TEMPLATE SPECIFICATION

Horizontal Footcandles
Scale: 1 Inch = 25 Ft.
Light Loss Factor = 1.00
Lumens Per Lamp = N.A. (absolute photometry)
Luminaire Lumens = 11628
Mounting Height = 18.00 Ft
Maximum Calculated Value = 9.51 Fc
Arrangement: Single

LUMINAIRE LAYOUT INFORMATION

<u>#</u>	<u>X</u>	<u>Y</u>	<u>Z</u>	<u>Orient</u>	<u>Tilt</u>	<u>Roll</u>	<u>Spin</u>	<u>Tilt Correction</u>
1	0.00	0.00	18.00	0.00	0.00	0.00	0.00	1.00